



MONTHLY MEMBERSHIP PROGRESS REPORT

District 318 B

Results as of: 06/30/2019

GMT: N S SANKAR

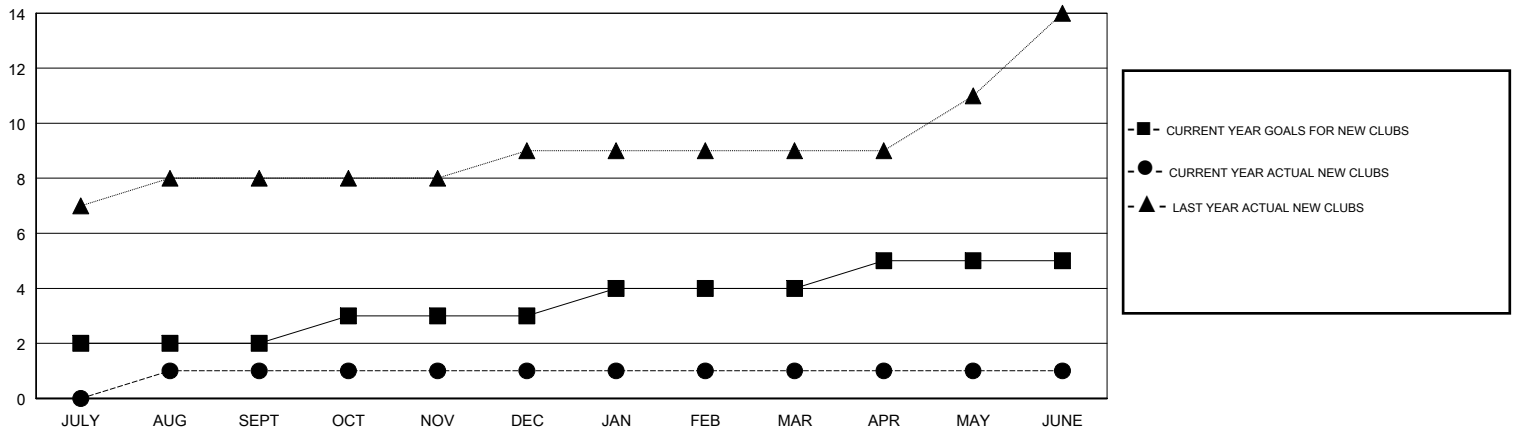
LOCATION INDIA

GMT CA

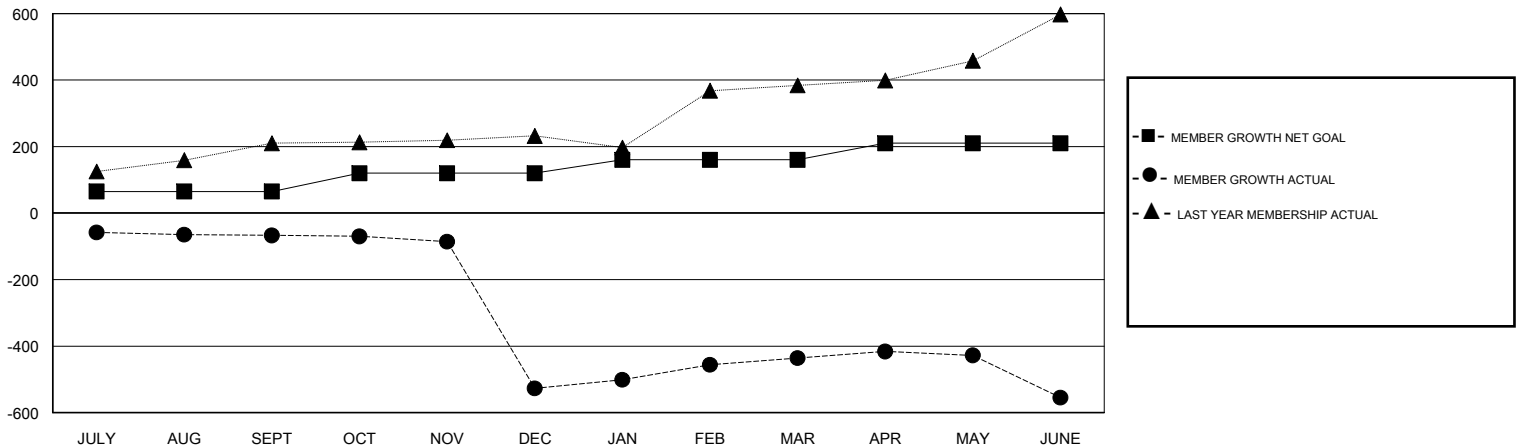
Clubs			
RESULTS FOR 2018-2019			
QUARTER	NEW CLUB GOAL	NEW CLUBS	DROPPED CLUBS
JULY/AUG/SEPT	2	1	2
OCT/NOV/DEC	1	0	11
JAN/FEB/MAR	1	0	0
APR/MAY/JUNE	1	0	1

Members			
RESULTS FOR 2018-2019			
QUARTER	MEMBER GROWTH NET GOAL	MEMBER GROWTH ACTUAL	DROPPED MEMBERS ACTUAL (including transfers)
JULY/AUG/SEPT	65	54	117
OCT/NOV/DEC	55	31	488
JAN/FEB/MAR	40	294	52
APR/MAY/JUNE	50	157	242

GOALS AND ACTUAL NEW CLUBS CUMULATIVE



GOALS AND ACTUAL MEMBERS CUMULATIVE



DROPPED CLUBS: 14

66 CLUBS OF 121 ADDED 1 OR MORE NEW MEMBERS

GENDER DISTRIBUTION

MALE 3,286 (86.22%)
 FEMALE 525 (13.78%)
 Women Percentage Fiscal Year Goal: 30%

DROPPED MEMBERS

[CLICK HERE FOR CUMULATIVE MEMBERSHIP DATA](#)

DECEASED	18
CLUB CANCELLED	404
OTHER	477
TOTAL	899

TOTAL FAMILY UNIT MEMBERS	1,004
FAMILY MEMBERS PAYING HALF DUES	523